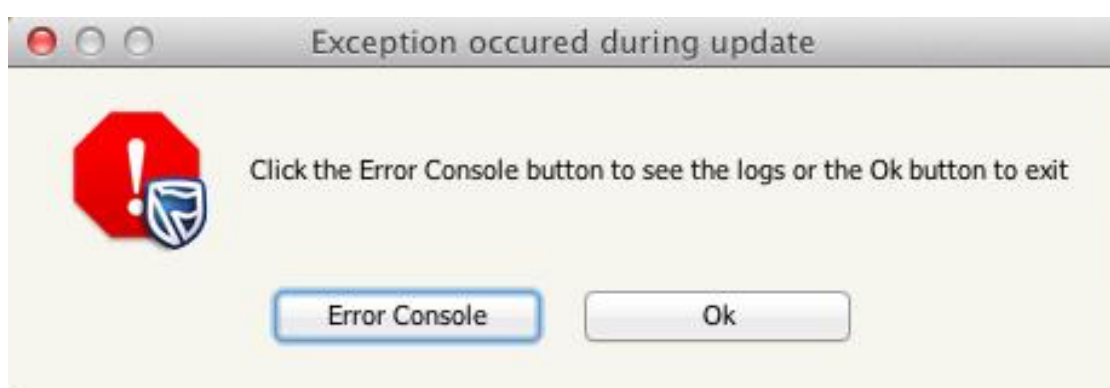




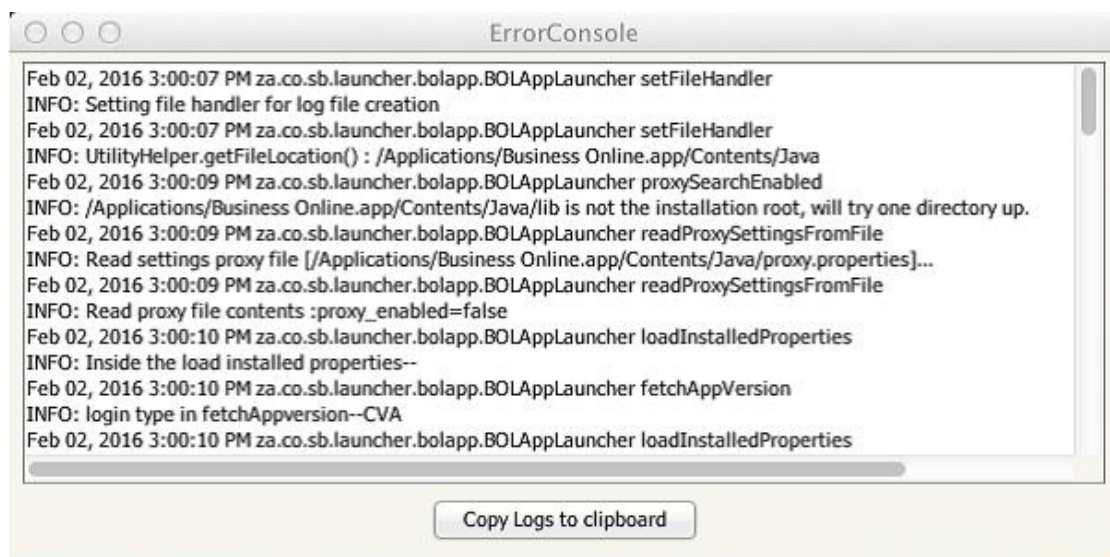
## Error Console

### Apple

1. In the event that an unrecoverable error occurs you will see a message similar to the one below, but the message may differ depending on the type of error. Click on 'Error Console' to show details.



2. The Error Console will be displayed. Click on 'Copy Logs to Clipboard'.



3. Open your email application and paste the contents of the clipboard into the mail application. Send it to your Standard Bank/Stanbic Bank Relationship Manager, or to our Service Support Contact Centre.